

Dear Friend,

Hello & welcome back to **Firewire**, your friendly guide to the exciting world of web-design & web-solutions! In the previous Newsletter we had covered how to create mouse over effect after slicing & optimizing the layout using Adobe Image Ready. In this Newsletter we will be covering How to create a Web Page using Layers.

A layer is a container that can hold text, images, tables, other layers and various types of multimedia. It gives more control and flexibility to make the page dynamic. For Example you can make Picture Gallery, Products Catalogue, Portfolios etc.

To make the tutorial practical & easy to understand we have created **Products Catalogue** as an example in Photoshop & Converted into HTML format.

Click here to download the layout.

After downloading the layout follow the steps given below:

1. Open the Layout in Photoshop. Keep separate Guides for each Image, Slice the whole Layout and Save the images in jpeg, gif or png format.



2. After saving the Images in jpeg, gif or png format, then open Macromedia Dreamweaver.

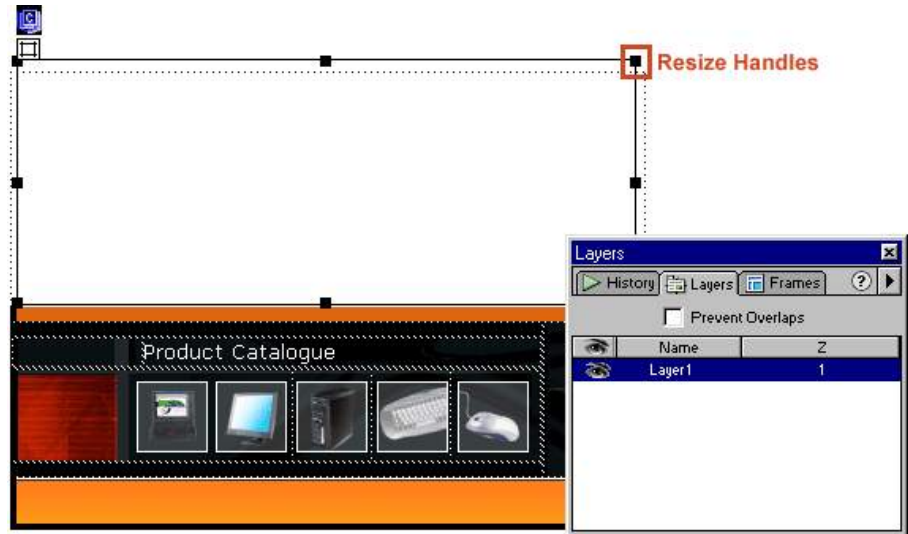
Click the Insert Table Button on the Common Category of the Objects Panel, or **Choose Insert > Table.**

If the Objects Panel is not visible, Choose **Window>Objects.**

The Insert Table dialog box appears.


If the Layers Panel is not visible, Choose **Window>Layers**.

For selecting the layer click the name of the Layer in the Layers panel. You can also resize the layer by dragging it. Just select the layer and drag any of its resize handles.



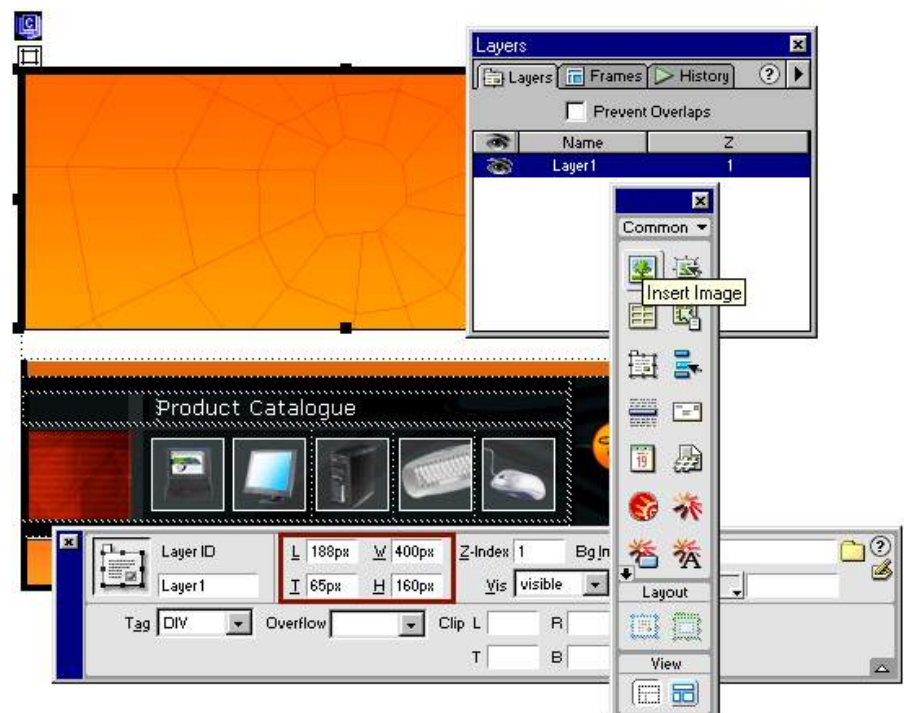
Layer Properties


If the Property inspector is not visible, Choose **Window>Properties**

Keep the Mouse Cursor inside **Layer 1**. Choose Insert Image Button  on the Common Category of the Objects Panel. Select the Background Image from the Image Source and click on the select button.

Use the Property inspector to specify the name and location of a layer as well as to set other layer options.

(In this example we have changed width, height, left & top position of the layer)



Draw another **Layer ie. Layer 2** from the Objects Panel. Keep the Mouse Cursor inside Layer 2. Choose **Insert Image Button**  on the Common Category of the Objects Panel. Select the Image from the Image Source and click on the select button.

With the help of Property inspector keep the same settings as of Layer 1



With the help of Property inspector you can also set following Properties:

- **Layer ID** - allows you to specify a name to identify the layer in the Layers Panel.
- **L AND T (Left and Top)** - specifies the position of the layer relative to the top left corner of the page.
- **W and H** - specifies the width and height of the layer.
- **Z-Index** - determines the z-index of the layer. Higher-numbered layers appear above lower-numbered layers. Values can be positive or negative.
- **Vis** - determines the initial display condition of the layer (visible or not).
- **Bg Image** - specifies a background image for the layer.
- **Bg Color** - specifies a background color for the layer.
- **Tag** - determines the HTML tag to be used. span and div are recommended
- **Overflow** - determines what happens if the contents of the layer exceed its set size.
- **Clip** - defines the visible area of a layer and can be used to cut content from the edges of the layer.

Similarly, make separate layer for each image.

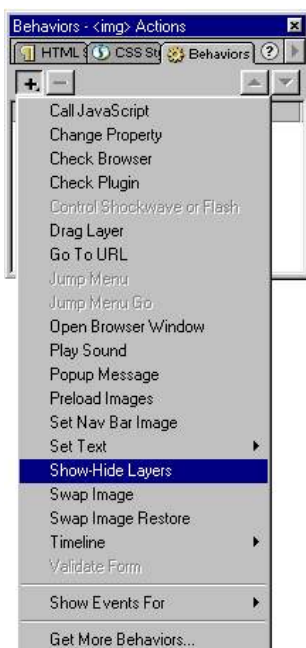


Behaviors

After creating different Layers for each Image Select the Product Catalogue's first image **ie. the Laptop Image**.



Then Choose **Window>Behaviors**



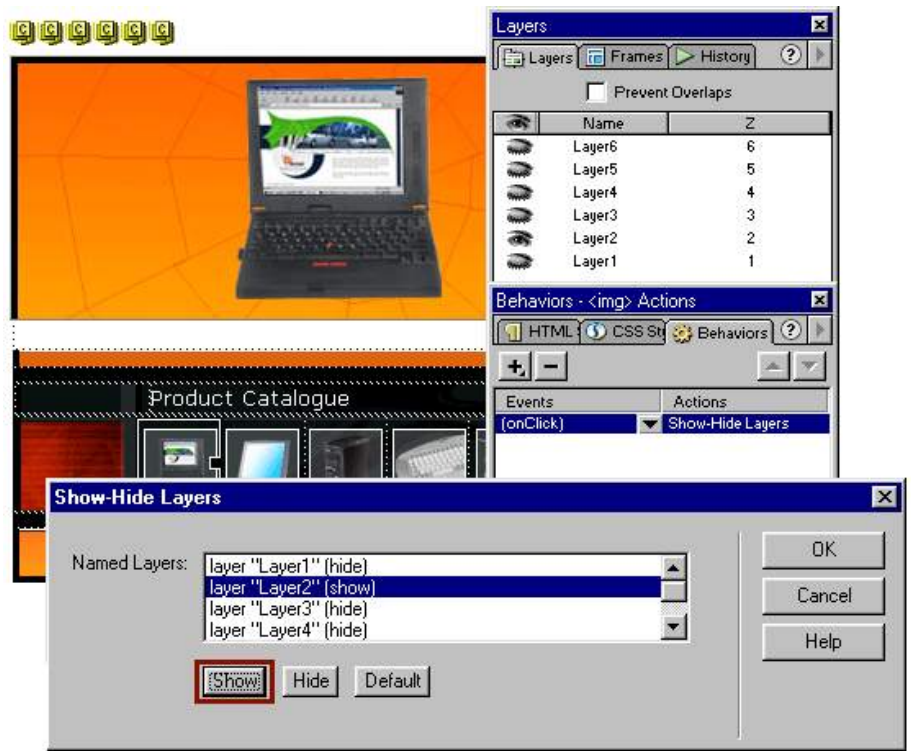
Click the **Plus (+)** button and choose **Show-Hide Layers** from the Actions Pop-up menu.

From the Show-Hide Layers list, Select Layer 1 and click on the Show button rest all the layers should be hidden.

From the Show-Hide Layers list, Select Layer 2 and click on the Show button. Keep all other layers hidden.

- **Show button shows the layer**
- **Hide button hides the layer**
- **Default button restores the layer's default visibility.**

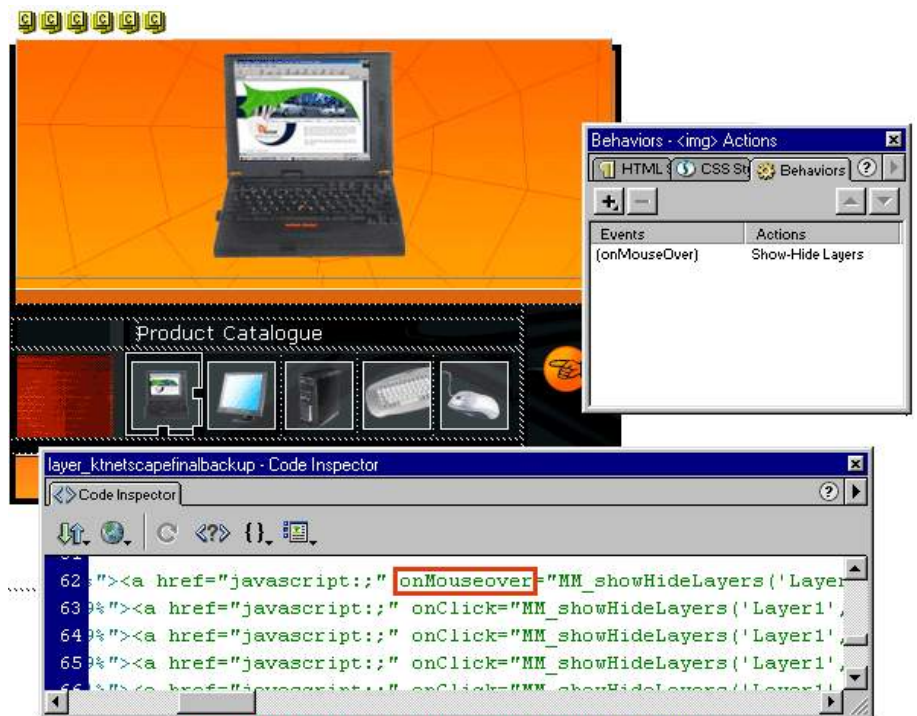
Then Click OK.



Note:

The Event in the Behaviors Panel shows (onMouseOver) as the Default Event.

If the Default Event has to be changed it can be changed directly from the source code.



Note : Change the onmouseover Event to onClick

There are other Events also such as onClick, onDbIclick, onKeyDown, onKeyPress, onKeyUp, onMouseDown, on MouseOut, onMouseOver, on MouseUp.

Repeat the above steps for remaining layers.

Regards,

Manoj Kotak.

Director - Image Online Pvt. Ltd.

Developer of Layout Galaxy *Ready to use design concept for the web.*

All accompanying logos, brands and product names are trademarks of their respective companies.



Blood for humans comes only from humans : Donate Blood

<http://www.donate-blood.org> E-mail - om@donate-blood.org

What is Layout Galaxy ?

Layout Galaxy is ready to use design concepts in their source format. Different CDs in total contain 300 Photoshop.psd & 100 Flash fla layouts. Select the layout, make necessary changes to suit a customer's need & present demo to the client for approval. It's Select, Set & Go. It saves web designer's time & cost of production. It accelerates web designer's work-pace. It enhances productivity. It is continuous flow of inspiration & wealth of design ideas. Download Free 7 (Photoshop & flash) Layouts to believe it yourself.