

Dear Friend,

Hello & welcome back to Firewire, your friendly guide to the exciting world of web-design & web-solutions!

We receive lots of requests from the users/newsletter subscribers to explain how to give the mouse over effect if they are creating the home page using Adobe Photoshop. In this Newsletter we are covering step by step guide on creating the mouse over effect after slicing & optimizing the layout using Adobe Image Ready.

NOTE:

To make the tutorial practical & easy to understand we have created a Layout in Photoshop & Converted into HTML format. [Click here to download the layout.](#)

After downloading the layout follow the below mentioned steps:

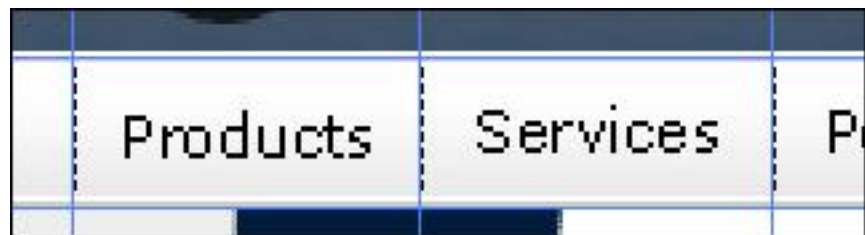
Photoshop Layout

Open the Layout in Photoshop

If the Rulers are hidden then choose **View > Show Rulers**

Remember the following steps before setting the Guides:

1. Keep **separate Guides for each button** or the image to which the mouse over effect has to be given.



2. **Create separate layers** for each mouse over in Adobe Photoshop and hide the layers.



3. Set the Guides accordingly and save the file



4. Then Choose File > Jump to > Adobe ImageReady

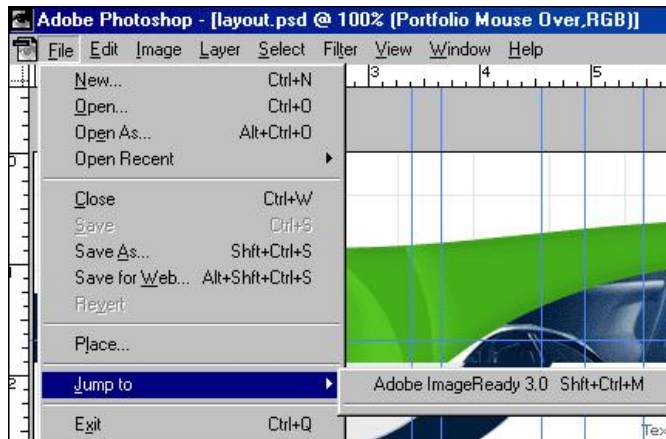
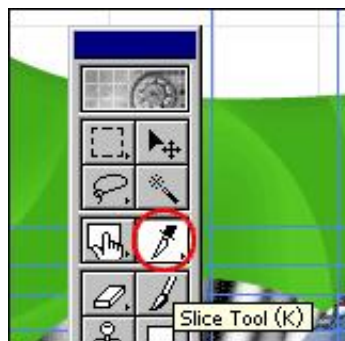


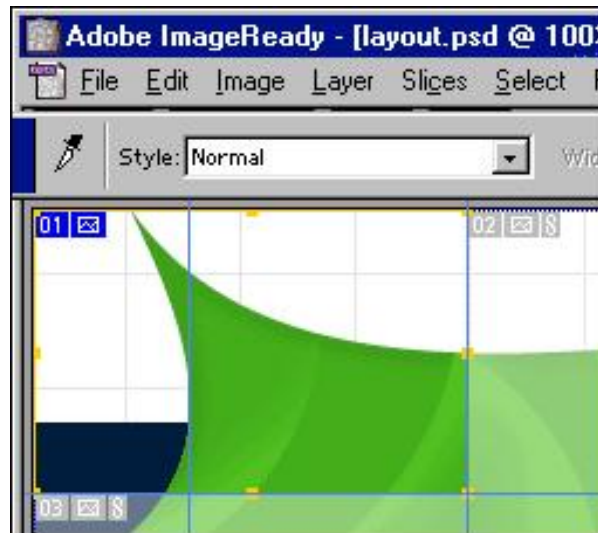
Image Ready - slicing

If the tool palette is not visible, Choose **Window > Show Tools**.

Select **Slice Tool** from the Tool Palette



After selecting the slice tool , **Drag the slice tool to create slice**

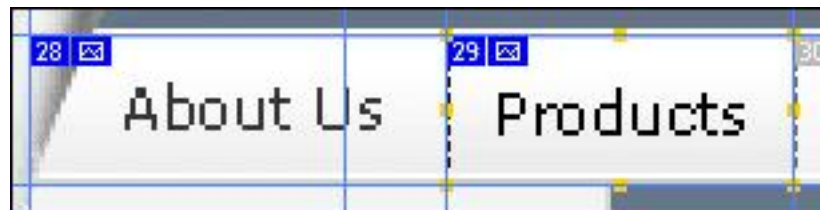


Follow the steps given above to slice the whole layout according to guides you have set.

After slicing the whole layout **Select Slice Tool from the Tool Palette**

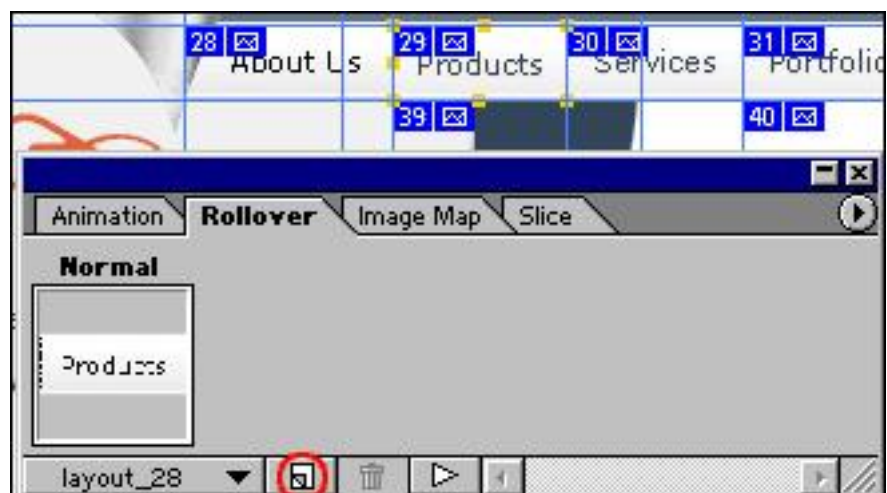


Select the slice to which the mouse over Effect has to be given.

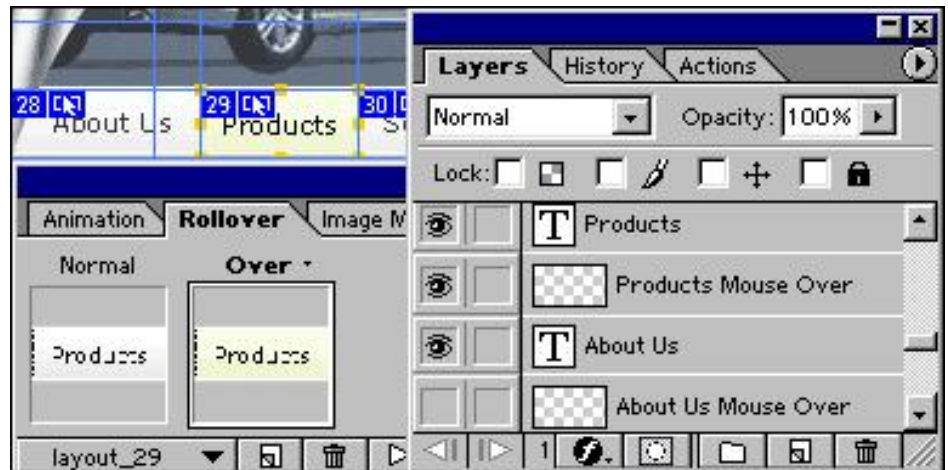


Choose Window > Show Rollover

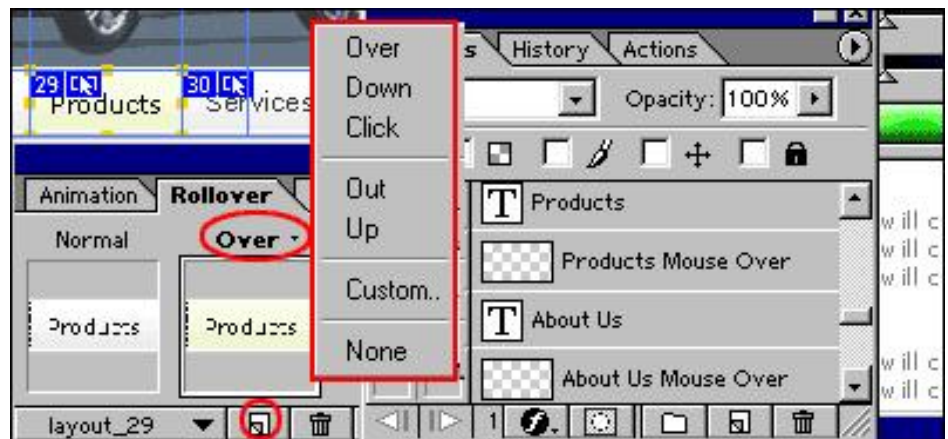
To create a New Rollover State click, **create New Rollover State Icon** in the Rollover Palette



Select the mouse over state from the Rollover palette and turn on the mouse over layer from the layer palette



Similarly by clicking on the create new rollover state icon in the Rollover palette you can define different mouse over state (i.e. Over, Down, Click, Out, Up and custom).



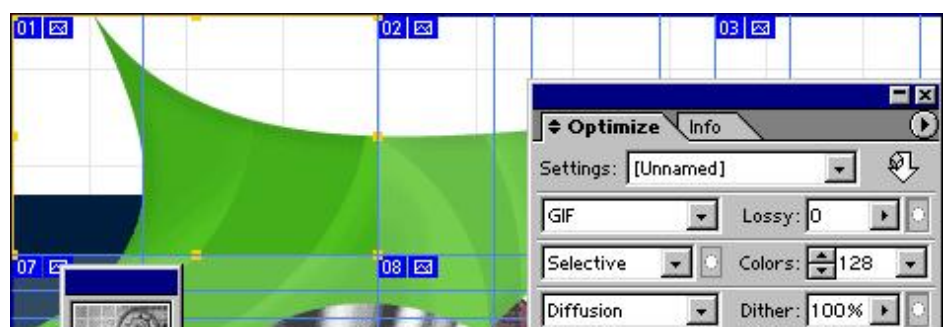
Follow the above mentioned steps of mouse over for all the buttons.

Optimization

For Optimizing particular slice

Select the slice and Choose window > Show optimize

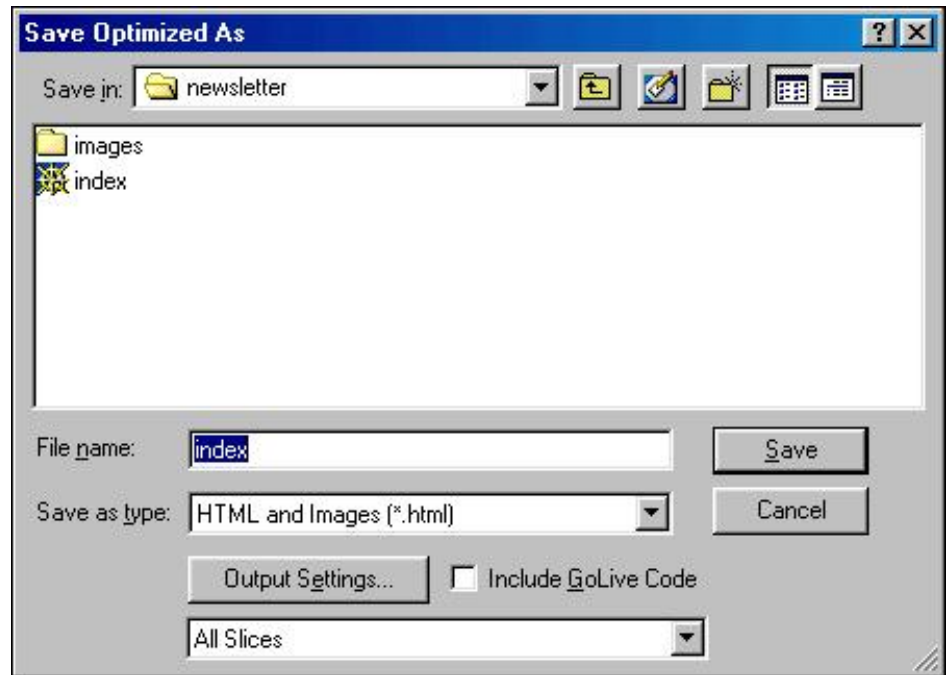
By selecting the slice you can set different settings for each slice according to size & quality of the image from the Optimize palette.



To preview an optimized layout
Choose **File > Preview in > Internet Explorer (or any other browser)**.

The browser displays the image with a caption listing the image's file type, pixel dimensions, file size and compression specifications in the first paragraph, and filename and other HTML information in the second paragraph.

Lastly for saving the file **Choose File > Save > Save optimized As**



Give the name of the file & save it.

Regards,
Manoj Kotak.
Director - Image Online Pvt. Ltd.
Developer of Layout Galaxy *Ready to use design concept for the web.*
All accompanying logos, brands and product names are trademarks of their respective companies.



Blood for humans comes only from humans : Donate Blood
<http://www.donate-blood.org> E-mail - om@donate-blood.org

What is Layout Galaxy ?

Layout Galaxy is ready to use design concepts in their source format. Different CDs in total contain 300 Photoshop.psd & 100 Flash.fla layouts. Select the layout, make necessary changes to suit a customer's need & present demo to the client for approval. It's Select, Set & Go. It saves web designer's time & cost of production. It accelerates web designer's work-pace. It enhances productivity. It is continuous flow of inspiration & wealth of design ideas. Download Free 7 (Photoshop & flash) Layouts to believe it yourself.